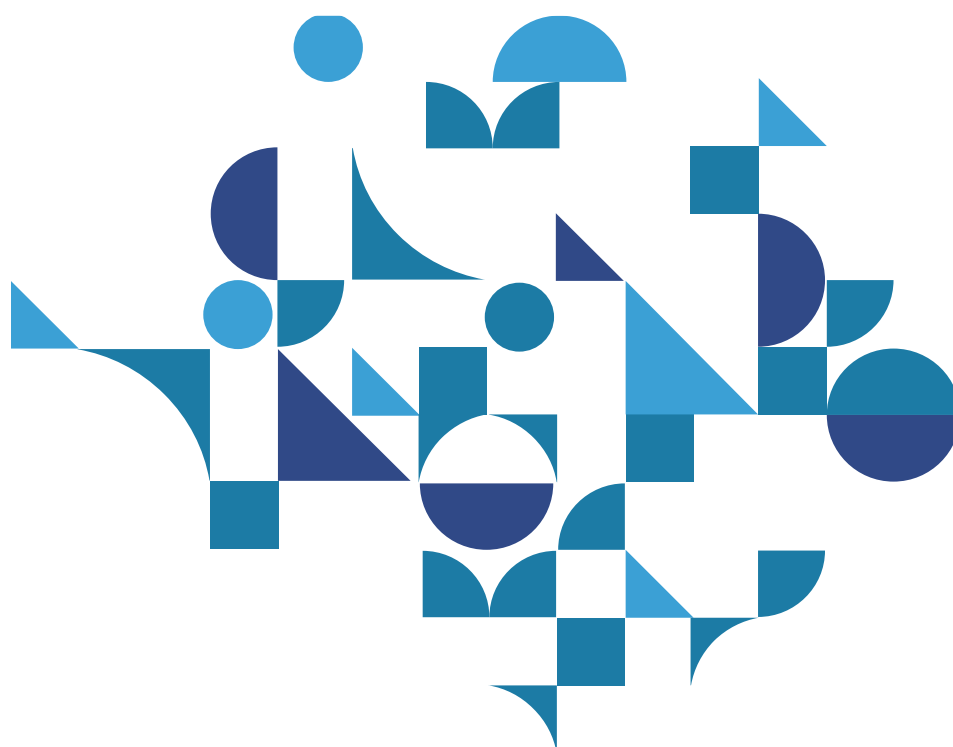




Industrial Engineering and
Management of European
Higher Education



IE3_1st Skype Meeting 10.01.2020



Co-funded by the
Erasmus+ Programme
of the European Union

The European Commission support for
the production of this publication does
not constitute endorsement of the contents
which reflects the views only of the authors,
and the Commission cannot be held
responsible for any use which may be made
of the information contained there in

Agenda	Participants
<ul style="list-style-type: none"> • Presentation of R1.1 draft by PUT; • Summary of next steps for WP2 by PoliBa / ValueDo; • Emerging relevant issues 	<ul style="list-style-type: none"> • POLIBA represented by Salvatore Digiesi; • PUT represented by Agnieszka Stachowiak and Joanna Oleskow-Szlapka; • LIU represented by Janerik Lundquist; • UPM represented by Joachin Ordieres; • VALUEDO represented by Alessandro Guadagni; • INFOTECH represented by Gianluigi De Pascale; • BOSCH represented by Felice De Stena; • ALCOMOT represented by Hanna Golas; • ARRUTI represented by Carlos Uruena.

Guadagni (VALUE) presents the agenda.

Stachowiak shows a presentation ([here](#), including the decision taken during the meeting) on the WP1 Action Plan, explaining the proposal that PUT elaborated.

- HEI List

First of all, Stachowiak (PUT) asks to list all the institutions which offered MSc Engineering Programmes offered in the Academic Year 2019/2020. The focus can be on both public or private universities. So they can all be present in the first part of the analysis, but not included in the deeper analysis with data mining.

All the information should be included in the excel file that will be shared as final version by PUT

- IE&M programmes

Partner are then asked to provide information on the IE&M programmes that the universities listed before are offering.

Partners agree to analyse just those programmes that have in the title the words “Production/Engineering/Industry/Industrial/Manufacturing” and “Management”, the other programmes including the word “Engineering” should be included just in case partners think it would bring added value.

All the information should be included in the excel file that will be shared as final version by PUT.

- 3. Courses offered

Out of the list of IE&M programmes the partners should analyze at least 15 programmes, providing to PUT the syllabi in English. Partners should select programmes that are more representative.

The selection of the course can be based on a geographical rationale just if this provides high added value for the research.

In this analysis, partners should also select at least 4 courses for each of the 15 programmes which altogether bring the sample of 60 courses from each country to be analyzed that are keeping into consideration Industry 4.0 related topics. As the titles of the courses could be misleading, the partners are invited to check the contents of the courses so to analyze if they are actually relating to 4.0 topics. If these courses are not in English, they should be translated by the researchers into English, using Google translator if needed.

All the information should be included in the excel file that will be shared as final version by PUT

As general recommendation, Lundquist (LIU) reminds that we must be focused on what we are doing now: WP1 is essential for selecting modules for the next steps to take them into consideration once we should create our content, regardless of where the university is located. Ordieres (UPM) underlines that the idea behind the project is not only to see what there is now as an offer, but above all to understand and analyze the existing gap between offer and demand. The research that universities must do is precisely this: understand what the gap is and find "solutions" to make it as shallow as possible. Stachowiak (PUT) explains that WP1 and WP2 will be developed and run in parallel, so to collect as much information that can be actually compared.

Stachowiak will share the flow chart and the Action Plan in excel format with all the partners by **13.01.2020**.

- Next Deadlines

- by **31.01.2020**: PUT to deliver the complete version of R1.1 "Desk Research on HEI educational offer Action Plan"
- by **07.02.2020**: Universities to identify the 15 institutions, select IE&M programs, deliver the syllabi and number of students to PUT. If some of the partners would need time for completing this task they should notify this to PoliBa and Valuedo, so to reschedule the next activities
- by **14.02.2020**: PoliBa to share the proposal for the qualitative questionnaire and the template for collecting the answers;
- by **28.02.2020**: the University partners to validate the proposal throughout trial interviews with companies.